

The Graduate Division





The Graduate Division

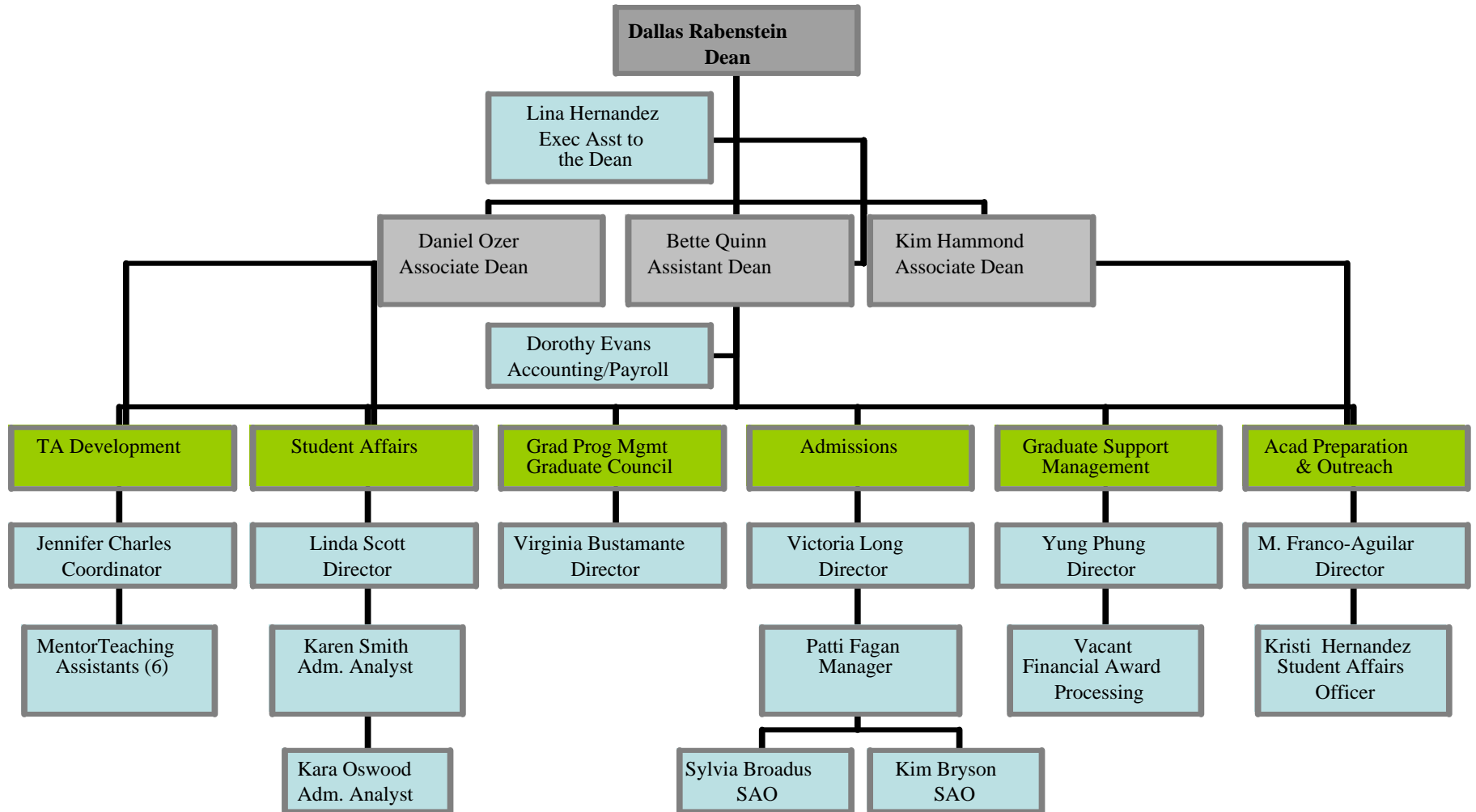
- Responsible for administration of graduate programs
 - Admission of graduate students
 - The academic programs of enrolled students
 - Fellowship funding
- Advocates for graduate students and graduate programs
- Not responsible for the curriculum in graduate programs



Graduate Council

- Academic Senate committee
- Approves curricula, graduate courses, etc
- Graduate program reviews

Organizational Chart for the Graduate Division



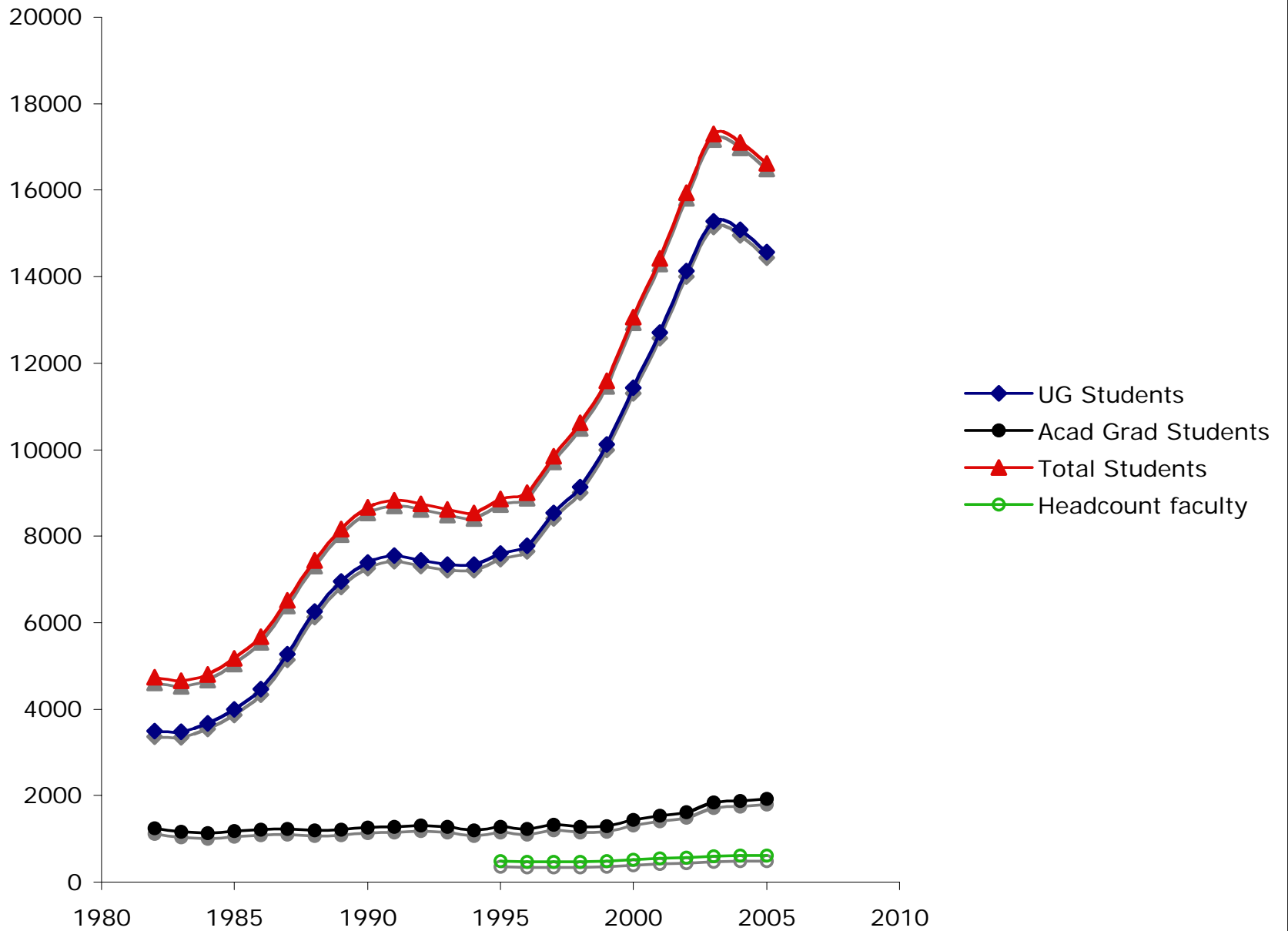


Overview of UCR Graduate Programs

- 37 Ph. D. programs
- 24 MS programs
- 20 MA programs
- 2 Master of Fine Arts (MFA) programs
- 1 MEd
- 1 MBA program

Overview of UCR Graduate Programs

College/School	Total Number of Graduate Students/Fall 2005		Expected Number of New Graduate Students/Fall 2006
CNAS	643		183
CHASS	659		172
COE	291		88
GSOE	209		116
AGSM	106		47
BioMed	16		4
TOTAL	1924		606





Higher Education in California

The Master Plan

- Community Colleges
 - First two years
- California State University
 - Bachelor's and Master's degrees
- University of California
 - Bachelor's, Master's and Doctoral degrees

Monday, September 18, 2006

[From the Graduate Dean](#)

[Graduate Programs at UCR](#)

[Prospective Graduate Students](#)

[Current Graduate Students](#)

[Academic Preparation & Outreach](#)

[Graduate Division Publications & Forms](#)

[Student Services](#)

[Graduate Division Staff Directory](#)

[Office Of Postdoctoral Studies](#)

[UCR Campus Home Page](#)

[NRC Assessment of UCR Doctoral Programs](#)



Graduate Division



- [WHAT'S NEW ...](#)
- [New Graduate Student Orientation Fall 2006](#)
- [2006 Doctoral Dissertation Advisor/Mentor Awards](#)
- [Important Dates for Graduate Students: 2006/2007](#)
- [Graduate Student Handbook 2006/2007](#)
- [Graduate Student Extramural Funding Opportunities](#)



University Office Building • Riverside, CA
92521 USA
FAX 951 827-2238

From the Graduate Dean

Monday, September 18, 2006

Graduate Programs at UCR

Prospective Graduate Students

- [Graduate Admission Information](#)
- [UCR: The Campus and Community](#)
- [Teaching Asst Development Program](#)
- [Campus Security & Crime Report](#)
- [Financial Support Opportunities](#)
- [Student Housing at UCR](#)
- [Student Parking Information](#)
- [UCR General Catalog](#)

Current Students

Academic Preparation & Outreach

Graduate Division Publications & Forms

Student Services

Office of Postdoctoral Studies

UCR Campus Home Page



Graduate Division



WHAT'S NEW ...

- [New Graduate Student Orientation Fall 2006](#)
- [2006 Doctoral Dissertation Advisor/Mentor Awards](#)
- [Important Dates for Graduate Students: 2006/2007](#)
- [Graduate Student Handbook 2006/2007](#)
- [Graduate Student Extramural Funding Opportunities](#)



University Office Building • Riverside, CA
 92521 USA
 FAX 951 827-2238

Monday, September 18, 2006

[From the Graduate Dean](#)

[Graduate Programs at UCR](#)

[Prospective Graduate Students](#)

[Current Graduate Students](#)

[Academic Preparation & Outreach](#)

[Graduate Division Publications & Forms](#)

[Student Services](#)

[Graduate Division Staff Directory](#)

[Office Of Postdoctoral Studies](#)

[UCR Campus Home Page](#)

[NRC Assessment of UCR Doctoral Programs](#)



Graduate Division



- WHAT'S NEW ...**
- [New Graduate Student Orientation Fall 2006](#)
- [2006 Doctoral Dissertation Advisor/Mentor Awards](#)
- [Important Dates for Graduate Students: 2006/2007](#)
- [Graduate Student Handbook 2006/2007](#)
- [Graduate Student Extramural Funding Opportunities](#)



University Office Building • Riverside, CA
92521 USA
FAX 951 827-2238

National Research Council (NRC) Assessment of Research Doctoral Programs

[Introduction](#)[More about the NRC Survey](#)[NRC Working Group](#)[Time Line](#)[Survey Questionnaires](#)[National Research Council Web Site](#)

- [Taxonomy](#)
- [Questionnaires](#)
- [Frequently Asked Questions](#)

UCR is participating in the National Research Council (NRC) assessment of research doctoral programs. The NRC previously conducted assessments of doctoral programs in 1983 and 1995. The stated purposes of the 2006 assessment are to:

- Help universities improve their doctoral programs through benchmarking.
- Expand the talent pool through accessible information, easily available to potential doctoral students, about doctoral programs.
- Benefit the nation's research capacity by improving the quality of doctoral programs and their students.

The NRC assessment will proceed primarily through questionnaires to universities, graduate programs, faculty, and students (for a few fields). The questionnaires will gather information about a large number of quantitative variables that are related to:

- Scholarly productivity of program faculty
- Effectiveness of doctoral education
- Research resources
- Demographic characteristics of students and faculty
- Resources available to doctoral students
- Characteristics of the doctoral program

These data will be used to construct a large web-resident database for about sixty fields of study, thus permitting comparisons of programs within a university and across universities

According to the *Chronicle of Higher Education*, the NRC survey of doctoral programs is considered the "gold standard" for rating American graduate programs

